

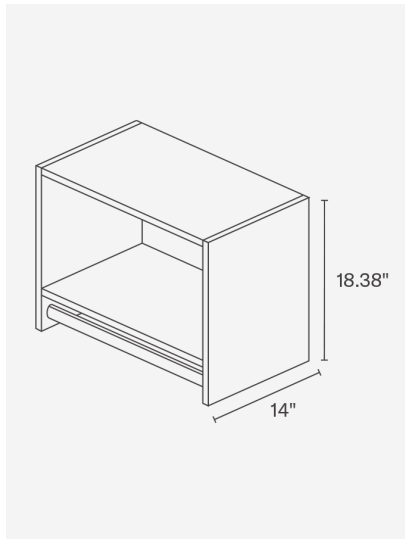


modular closets.
FOR MULTIFAMILY

Product Catalog

multifamily.modularclosets.com

Tall Hanging



● Also available in Driftwood Gray

Medium Hanging



● Also available in Driftwood Gray

Specifications

Collection	Vista
Product Type	Tall Hanging
Fiberboard	3/4" Melamine
Color	White/Gray
Finish	Laminate

Assembled Dimensions

Height	18"
Depth	14"
Width Options	19.5" 21" 22.5" 25.5" 27" 28.5" 31.5" 33" 34.5"

Item Details

Mount Type	Wall Mount
Clothing Rod Included	Yes
Number of Rods	1
Rod Style	Oval, Chrome
Adjustable Shelves	No
# of Adjustable Shelves	N/A
Fixed Shelves	Yes
# of Fixed Shelves	2
Drawers Included	No
Shelf Weight Capacity	50 lbs
Rod Weight Capacity	50 lbs
Total Weight Capacity	150 lbs

Specifications

Collection	Vista
Product Type	Medium Hanging
Fiberboard	3/4" Melamine
Color	White/Gray
Finish	Laminate

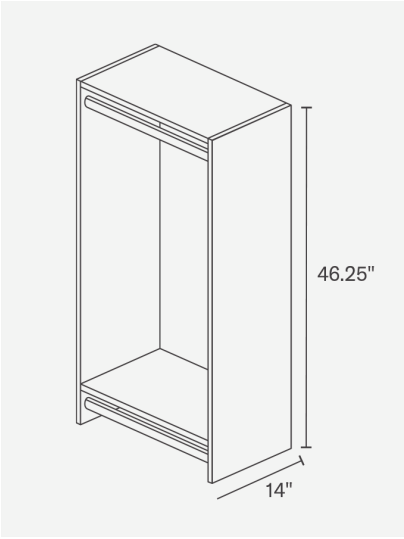
Assembled Dimensions

Height	33.66"
Depth	14"
Width Options	19.5" 25.5" 31.5"

Item Details

Mount Type	Wall Mount
Clothing Rod Included	Yes
Number of Rods	1
Rod Style	Oval, Chrome
Adjustable Shelves	Yes
# of Adjustable Shelves	2
Fixed Shelves	Yes
# of Fixed Shelves	2
Drawers Included	No
Shelf Weight Capacity	50 lbs
Rod Weight Capacity	50 lbs
Total Weight Capacity	250 lbs

Double Hanging



● Also available in Driftwood Gray

Specifications

Collection	Vista
Product Type	Double Hanging
Fiberboard	3/4" Melamine
Color	White/Gray
Finish	Laminate

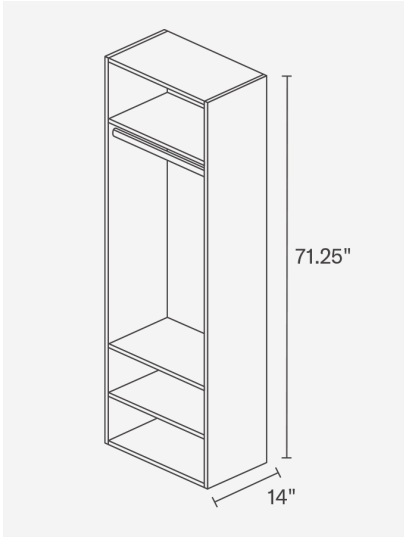
Assembled Dimensions

Height	46"
Depth	14"
Width Options	19.5" 21" 22.5" 25.5" 27" 28.5" 31.5" 33" 34.5"

Item Details

Mount Type	Wall Mount
Clothing Rod Included	Yes
Number of Rods	2
Rod Style	Oval, Chrome
Adjustable Shelves	No
# of Adjustable Shelves	N/A
Fixed Shelves	Yes
# of Fixed Shelves	2
Drawers Included	No
Shelf Weight Capacity	50 lbs
Rod Weight Capacity	50 lbs
Total Weight Capacity	200 lbs

Hanging Tower



● Also available in Driftwood Gray

Specifications

Collection	Vista
Product Type	Hanging Tower
Fiberboard	3/4" Melamine
Color	White/Gray
Finish	Laminate

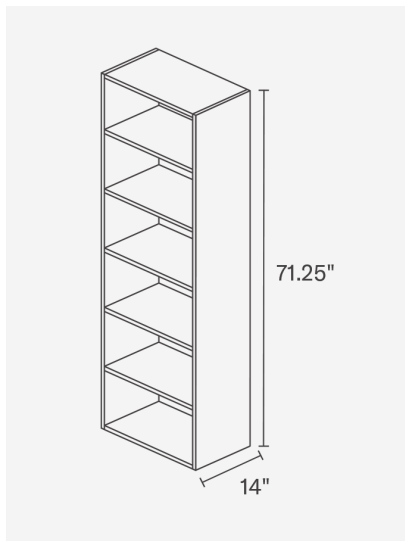
Assembled Dimensions

Height	71.25"
Depth	14"
Width Options	19.5" 25.5" 31.5"

Item Details

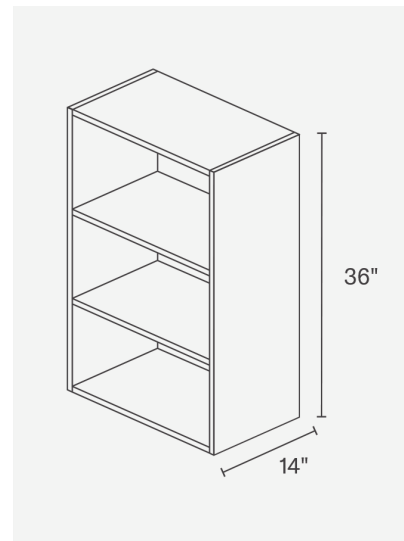
Mount Type	Wall Mount
Clothing Rod Included	Yes
Number of Rods	1
Rod Style	Oval, Chrome
Adjustable Shelves	Yes
# of Adjustable Shelves	1
Fixed Shelves	Yes
# of Fixed Shelves	4
Drawers Included	No
Shelf Weight Capacity	50 lbs
Rod Weight Capacity	50 lbs
Total Weight Capacity	300 lbs

Shelf Tower



● Also available in Driftwood Gray

Short Tower



● Also available in Driftwood Gray

Specifications

Collection	Vista
Product Type	Shelf Tower
Fiberboard	3/4" Melamine
Color	White/Gray
Finish	Laminate

Assembled Dimensions

Height	71.25" (84" with legs)
Depth	14"
Width Options	19.5" 25.5" 27" 31.5"

Item Details

Mount Type	Wall Mount
Clothing Rod Included	No
Number of Rods	N/A
Rod Style	N/A
Adjustable Shelves	Yes
# of Adjustable Shelves	4
Fixed Shelves	Yes
# of Fixed Shelves	3
Drawers Included	No
Shelf Weight Capacity	50 lbs
Rod Weight Capacity	N/A
Total Weight Capacity	350 lbs

Specifications

Collection	Vista
Product Type	Short Tower
Fiberboard	3/4" Melamine
Color	White/Gray
Finish	Laminate

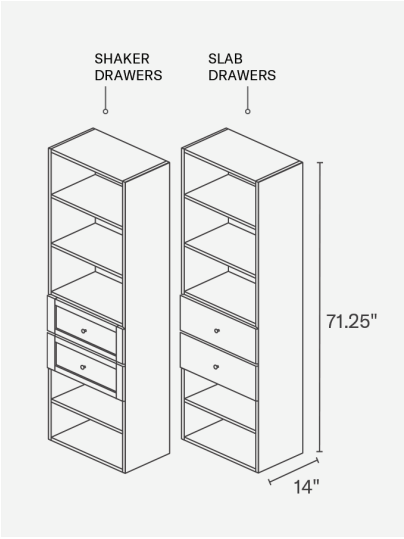
Assembled Dimensions

Height	36" (48" with legs)
Depth	14"
Width Options	19.5" 25.5" 31.5"

Item Details

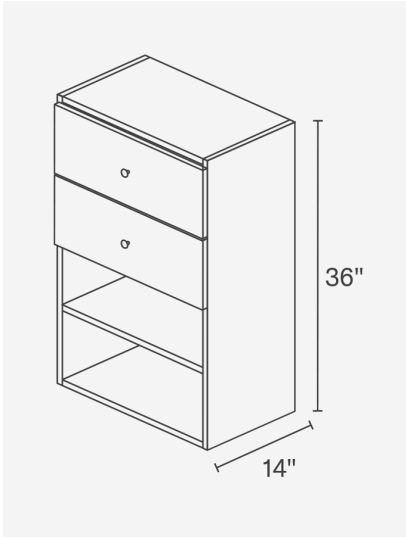
Mount Type	Wall Mount
Clothing Rod Included	No
Number of Rods	N/A
Rod Style	N/A
Adjustable Shelves	Yes
# of Adjustable Shelves	2
Fixed Shelves	Yes
# of Fixed Shelves	2
Drawers Included	No
Shelf Weight Capacity	50 lbs
Rod Weight Capacity	N/A
Total Weight Capacity	200 lbs

2 Drawer Shelf Tower



● Also available in Driftwood Gray

2 Drawer Short Tower



● Also available in Driftwood Gray

Specifications

Collection	Vista
Product Type	Shelf Tower w/ 2 Drawers
Fiberboard	3/4" Melamine
Color	White/Gray
Finish	Laminate

Assembled Dimensions

Height	71.25" (84" with legs)
Depth	14"
Width Options	19.5" 25.5" 31.5"

Item Details

Mount Type	Wall Mount
Clothing Rod Included	No
Number of Rods	N/A
Adjustable Shelves	Yes
# of Adjustable Shelves	4
Fixed Shelves	Yes
# of Fixed Shelves	3
Drawers Included	Yes
Number of Drawers	2
Shelf Weight Capacity	50 lbs
Rod Weight Capacity	N/A
Total Weight Capacity	350 lbs

Specifications

Collection	Vista
Product Type	Short Tower w/ 2 Drawers
Fiberboard	3/4" Melamine
Color	White/Gray
Finish	Laminate

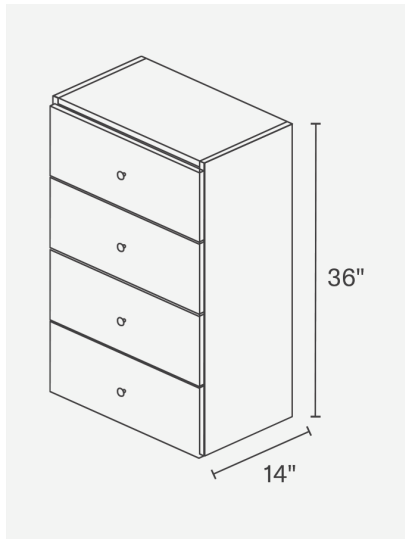
Assembled Dimensions

Height	36" (48" with legs)
Depth	14"
Width Options	19.5" 25.5" 31.5"

Item Details

Mount Type	Wall Mount
Clothing Rod Included	No
Number of Rods	N/A
Adjustable Shelves	Yes
# of Adjustable Shelves	2
Fixed Shelves	Yes
# of Fixed Shelves	2
Drawers Included	Yes
Number of Drawers	2
Shelf Weight Capacity	50 lbs
Rod Weight Capacity	N/A
Total Weight Capacity	200 lbs

4 Drawer Short Tower



● Also available in Driftwood Gray

Specifications

Collection	Vista
Product Type	Short Tower w/ 4 Drawers
Fiberboard	3/4" Melamine
Color	White/Gray
Finish	Laminate

Assembled Dimensions

Height	36"
Depth	14"
Width Options	19.5" 25.5" 31.5"

Item Details

Mount Type	Wall Mount
Clothing Rod Included	No
Number of Rods	N/A
Adjustable Shelves	No
# of Adjustable Shelves	N/A
Fixed Shelves	Yes
# of Fixed Shelves	2
Drawers Included	Yes
Number of Drawers	4
Shelf Weight Capacity	50 lbs
Rod Weight Capacity	N/A
Total Weight Capacity	200 lbs

4 Drawer Shelf Tower



● Also available in Driftwood Gray

Specifications

Collection	Vista
Product Type	Shelf Tower w/ 4 Drawers
Fiberboard	3/4" Melamine
Color	White/Gray
Finish	Laminate

Assembled Dimensions

Height	71.25" (84" with legs)
Depth	14"
Width Options	19.5" 25.5" 31.5"

Item Details

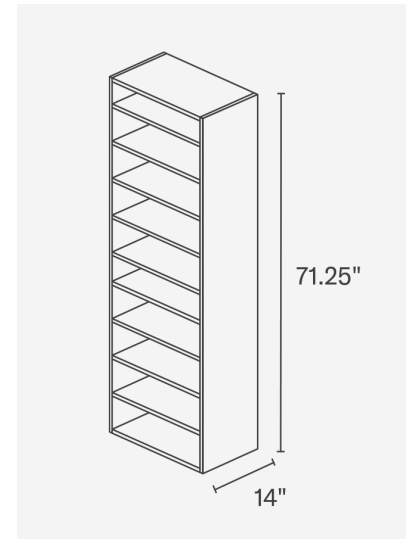
Mount Type	Wall Mount
Clothing Rod Included	No
Number of Rods	N/A
Adjustable Shelves	Yes
# of Adjustable Shelves	2
Fixed Shelves	Yes
# of Fixed Shelves	3
Drawers Included	Yes
Number of Drawers	4
Shelf Weight Capacity	50 lbs
Rod Weight Capacity	N/A
Total Weight Capacity	350 lbs

2 Drawer Hanging Tower



● Also available in Driftwood Gray

Shoe Shelf Tower



● Also available in Driftwood Gray

Specifications

Collection	Vista
Product Type	Hanging Tower w/ 2 Drawers
Fiberboard	3/4" Melamine
Color	White/Gray
Finish	Laminate

Assembled Dimensions

Height	71.25"
Depth	14"
Width Options	19.5" 25.5" 31.5"

Item Details

Mount Type	Wall Mount
Clothing Rod Included	Yes
Number of Rods	1
Rod Style	Oval, Chrome
Adjustable Shelves	No
Fixed Shelves	Yes
# of Fixed Shelves	4
Drawers Included	Yes
Number of Drawers	2
Shelf Weight Capacity	50 lbs
Rod Weight Capacity	50 lbs
Total Weight Capacity	300 lbs

Specifications

Collection	Vista
Product Type	Shoe Tower
Fiberboard	3/4" Melamine
Color	White/Gray
Finish	Laminate

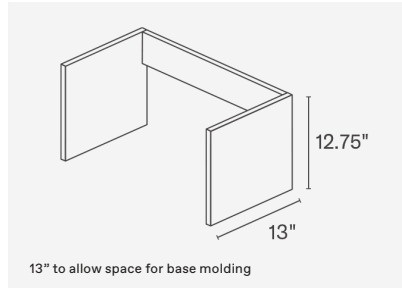
Assembled Dimensions

Height	71.25" (84" with legs)
Depth	14"
Width Options	19.5" 25.5" 31.5"

Item Details

Mount Type	Wall Mount
Clothing Rod Included	No
Number of Rods	N/A
Rod Style	N/A
Adjustable Shelves	Yes
# of Adjustable Shelves	8
Fixed Shelves	Yes
# of Fixed Shelves	3
Drawers Included	No
Shelf Weight Capacity	35
Rod Weight Capacity	N/A
Total Weight Capacity	385 lbs

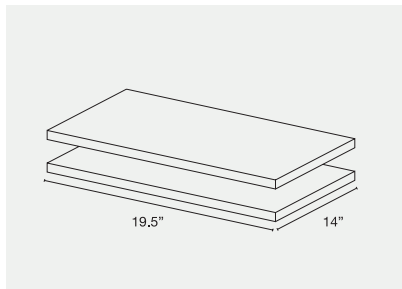
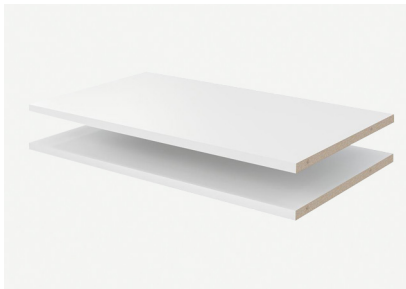
Leg Extensions



● Also available in Driftwood Gray

White SKU	Width	Gray SKU	Width
WFB-LE19.5	19.5	GFB-LE19.5	19.5
WFB-LE25.5	25.5	GFB-LE25.5	25.5
WFB-LE31.5	31.5	GFB-LE31.5	31.5

Set of 2 Shelves



● Also available in Driftwood Gray

White SKU	Width	Gray SKU	Width
WFB-AS18-2	19.5	GFB-AS18-2	19.5
WFB-AS25.5-2	25.5	GFB-AS25.5-2	25.5
WFB-AS31.5-2	31.5	GFB-AS31.5-2	31.5

Set of 2 Drawers



White Shaker

Gray Slab

W Shaker SKU	Width	G Slab SKU	Width
WFB-DR19.5-SH	19.5	GFB-DR19.5-SH	19.5
WFB-DR25.5-SH	25.5	GFB-DR25.5-SH	25.5
WFB-DR31.5-SH	31.5	GFB-DR31.5-SH	31.5

W Slab SKU	Width
WFB-DR19.5-SL	19.5
WFB-DR25.5-SL	25.5
WFB-DR31.5-SL	31.5

Doors for Tower Units



White Shaker

W Shaker SKU	Width
WFB-TWD19.5-SH	19.5
WFB-TWD25.5-SH	25.5
WFB-TWD31.5-SH	31.5

W Slab SKU	Width
WFB-TWD19.5-SL	19.5
WFB-TWD25.5-SL	25.5
WFB-TWD31.5-SL	31.5



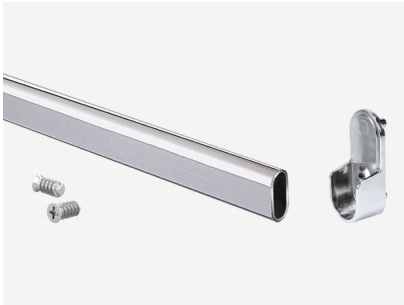
Gray Slab

G Slab SKU	Width
GFB-TWD19.5-SL	19.5
GFB-TWD25.5-SL	25.5
GFB-TWD31.5-SL	31.5

G Slab SKU	Width
VAC-CR19.5	19.5
VAC-CR22.5	22.5
VAC-CR25.5	25.5
VAC-CR28.5	28.5
VAC-CR31.5	31.5
VAC-CR33	33

Note: 18" and 19.5" have single doors

Oval Rod



Product Specifications



- A** All closet components - solid 3/4" fiberboard
- B** Italian cam lock assembly system - with added dowels
- C** Rear hanging cleats - 3/4" fiberboard
- D** Shelves - solid 3/4" fiberboard
- E** All panels pre-drilled, ready to assemble
- F** Drawer box - 5/8", natural finished wood drawers
- G** Drawer slides - Full extension, side mounted
- H** Drawer fronts - white or driftwood melamine, 3/4" thick
- I** Steel oval hanging rods
- J** Stainless steel shelf pins
- K** Optional tower floor supports



modular closets.
FOR MULTIFAMILY

Call 844.969.4247

modularclosets.com/patent